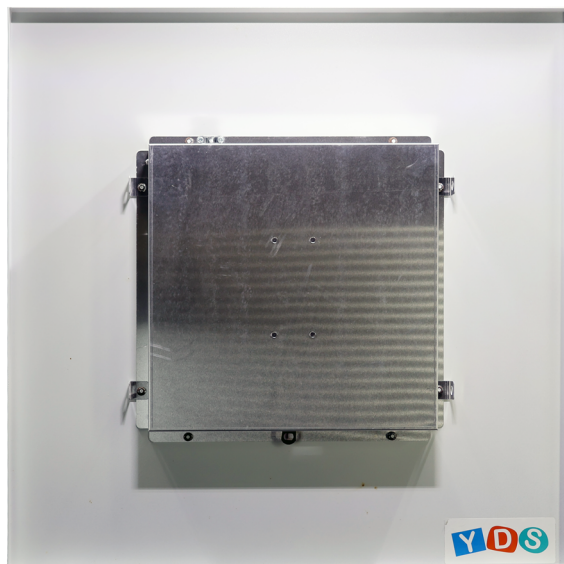


YDS-SCE-051**Suspended Ceiling Enclosure Solutions for the Aruba, Cisco,
Mist, Meraki, Access Points**

Front View



Back View

**YDS-SCE-051****Suspended Ceiling Enclosure Solutions for the Aruba, Cisco,
Mist, Meraki, Access Points****Specifications**

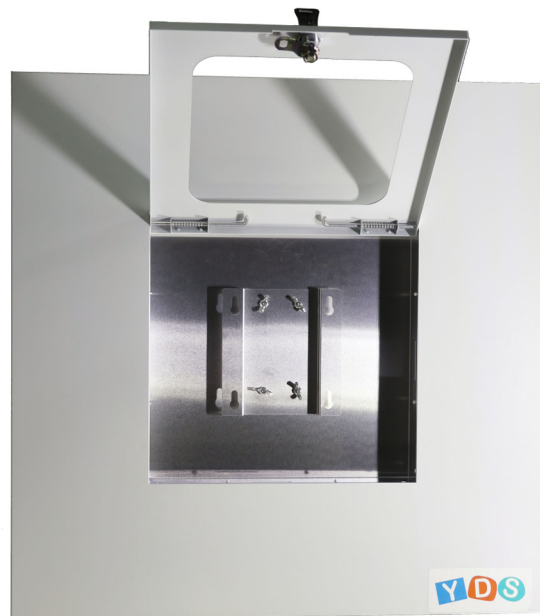
Ceiling Enclosure Model No.	YDS-SCE-051
Application	Indoor Wi-Fi
Color	White or Customization
Compatibility	Aruba/HP AP-314 Aruba/HP AP-315 Aruba/HP AP-344 Aruba/HP AP-345 Aruba/HP AP-504 Aruba/HP AP-514 Aruba/HP AP-515 Aruba/HP AP-518 Aruba/HP AP-535 Aruba/HP AP-555 Aruba/HP AP-565 Aruba/HP AP-567 Aruba/HP AP-635 Aruba/HP AP-655
	Cisco 3802e Cisco 3802i Cisco 9162i Cisco 9164i Cisco 9166i Cisco Catalyst 9105AXI Cisco Catalyst 9120AXE Cisco Catalyst 9120AXI Cisco Catalyst 9136i Cisco IW9167E Cisco Catalyst 9130AXI

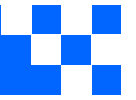
YDS-SCE-051**Suspended Ceiling Enclosure Solutions for the Aruba, Cisco,
Mist, Meraki, Access Points****Specifications**

Compatibility	Mist AP32 Mist AP32E Mist AP33 Mist AP41 Mist AP41E Mist AP43 Mist AP43E Mist AP45
	Meraki MR46 Meraki MR56
Enclosure Style	Suspended Ceiling (Includes tabs for securing to building structure)
Indoor/Outdoor	Indoor
Installation Type	Suspended Ceiling Grid; AP Mounting Feet onto Included Mounting Bracket
Lock Type	Key Lock or Customization
Material	Aluminum or Customization
Technology	802.11ac, 802.11ax, 802.11n
Dimensions	603.25mm x 603.25mm x 38.1mm

YDS-SCE-051

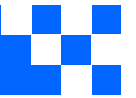
**Suspended Ceiling Enclosure Solutions for the Aruba, Cisco,
Mist, Meraki, Access Points**



**YDS-SCE-051**

**Suspended Ceiling Enclosure Solutions for the Aruba, Cisco,
Mist, Meraki, Access Points**



**YDS-SCE-051**

**Suspended Ceiling Enclosure Solutions for the Aruba, Cisco,
Mist, Meraki, Access Points**

